



ANNUAL REPORT
January – December 2020





Joondalup Family Centre wishes to acknowledge and thank the Traditional Owners of the Land, the Mooro people of the Noongar nation on which we meet, work, and live. We acknowledge the Elders of the past, present and future.

TABLE OF CONTENTS

About us _____	4
Our people _____	5
Our supporters _____	6
Centre Users _____	6
Organisational structure _____	7
Chairpersons report _____	8
Finances _____	9
Treasurers Report _____	9
Statement of Financial position _____	10
Statement of income and expenditure _____	11
Operations _____	12
Program and services report _____	12
Children's Services _____	14
Pre-Kindy Services _____	14
Early Years Playgroup _____	15
Our year in photos _____	17
YOUR SUPPORT _____	20

ABOUT US

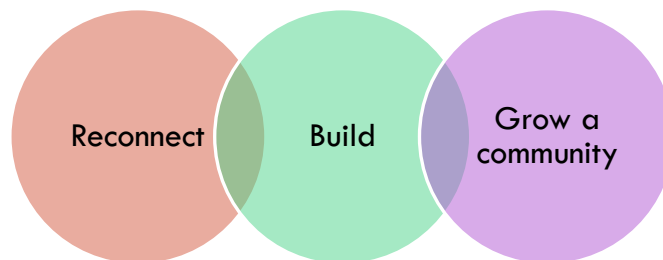
Our History

The Joondalup Family Centre Inc. (JFC) is a not-for-profit community-based organisation established in 1992 to offer a range of programs and services to the people of Joondalup and surrounding areas.

A voluntary Management Committee, comprised of people from the local community, provides governance and leadership to JFC operations. The Management Committee has the vital role of providing strategic direction, support and collaboration to ensure that the Centre is able to be effective, efficient and sustainable and ensure necessary funding and oversee the high professional standards expected within the organisation.

JFC's programs, services and facilities are generously supported by the WA Department of Communities. The organisation also receives ongoing support from our peak body, Linkwest and the Department of Communities Educational Care and Regulatory Unit.

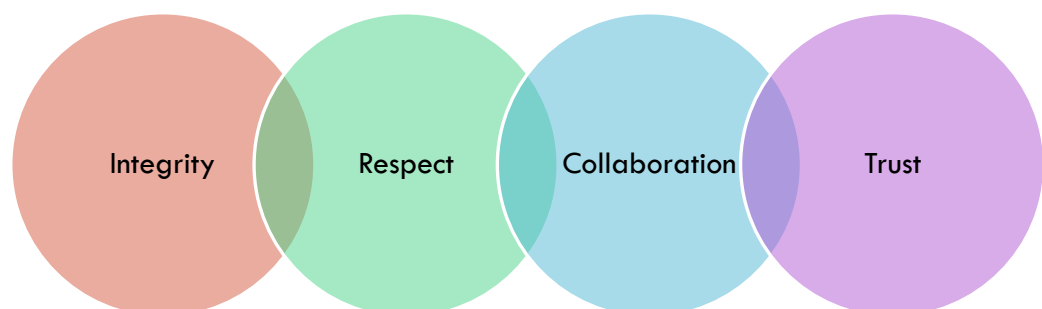
Our Vision



Our Purpose

Our purpose is to connect, inspire and support our community to grow together through the delivery of quality community and education programs that are inclusive and build cohesiveness.

Our Values



OUR PEOPLE

Current Board Members

Chairperson

Julie Zajer

Vice Chairperson

Sara Browne

Secretary

Natasha Williams

Treasurer

Neha Patel

General Members

Nathan Pickering

Kate Campbell

Teresa Gastevich

Mel Wright

Ivan Vujicic

Past Board Members (January - December 2020)

Chairperson

Penny Dowds

Vice Chairperson

Pasan Ganegama

Treasurer

Julian Eve

General Members

Pedus Eweana

Suzanne Christie

Bojan Cica

Current Employees

Programs and Services Manager

Maree Jones

Pre-Kindergarten Educational Leader

Sarah Sansom

Pre-Kindergarten Support Educator

Angela Wingfield

Playgroup Coordinator

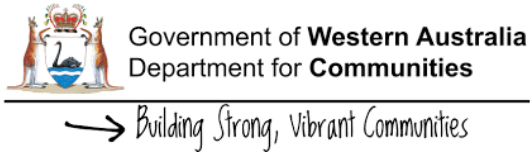
Tammy Lo Biundo

Past Employees

Programs and Services Support Coordinator

Sonja Davidson (Aug 2020)

OUR SUPPORTERS



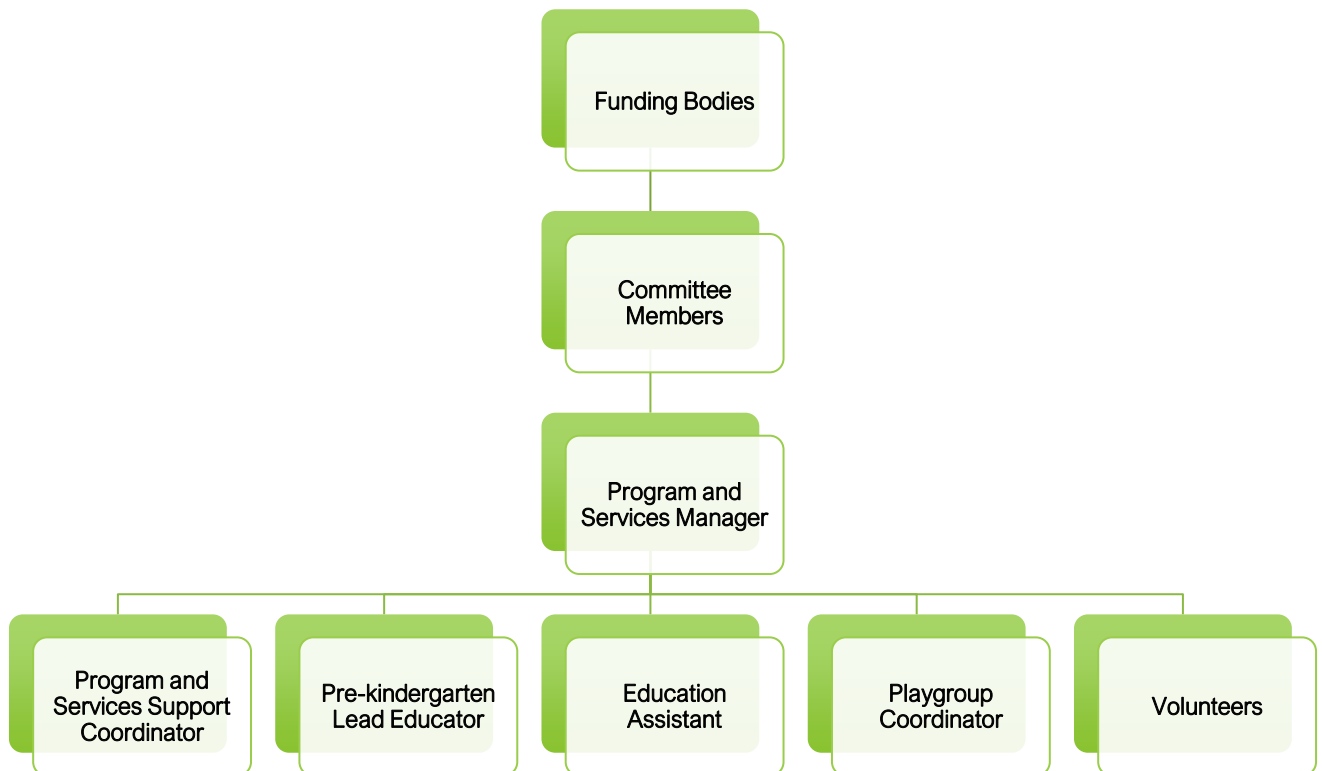
"Joondalup Family Centre would like to thank the funders, and agencies that supported us in 2020".

CENTRE USERS

The centre has several people who use it on a casual basis for one off meetings or birthday parties throughout the year. Below are some of our regular community groups who run weekly activities to benefit our local community:

- | | |
|-------------------------------------|-----------------------------------|
| Air Brush Venturi | Grace Christian Reformed Church |
| Alcoholics Anonymous | Kobda Bioenergetics |
| All Stars for Autism | LitCity |
| Art in the Garage | Motherlite |
| Autism WA | Narcotics Anonymous |
| Brooke Dunnell Home Schooling | Ngala Parenting Connections |
| Child and Adolescent Health Service | Sea Starz |
| Conscious Lifestyler | Sparkle Slime Station |
| Crafty Chix | Viva Speech Pathology |
| Cygnets Dance | WA Department of Health |
| Dickie Architects | WA Department of Child Protection |
| Forward in Faith Ministries | Youth with Love |
| Fusion Creative | |

ORGANISATIONAL STRUCTURE



CHAIRPERSONS REPORT

As I enter my second year as Chair of Joondalup Family Centre, I continue to feel humbled with the outstanding work of all connected to Joondalup Family Centre.

2020 has been an extraordinary year and has served as an important reminder of the importance of a supportive community environment, throughout these challenging times, it was heartening to see the Centre's unwavering commitment to serving the community, children & families.

The board has been focused on not just getting through the Pandemic but on learnings from past & present pandemics. We continued to pivot as required to ensure we maintained our commitment to the changing needs of families and communities, to meet the challenges of children & young people.

The board in conjunction with staff worked on our Strategic Plan, looking towards 2025, we believe this has positioned us, to expand on our services & ensure that "community" comes first. As we look to enter our 30th year, we are excited for what our 30th year will bring and what expansion will be happening. We look forward to sharing this very special birthday with you all. In what has been tumultuous and challenging circumstances, I thank the board for their dedication to support the strategic direction of JFC, would like to thank Natasha Williams for her commitment to ensuring governance, protocols & good practices during this time.

I would like to also acknowledge the board members that said good-bye to JFC throughout the year and thank them for their time with us.

A massive thank you to Maree and her staff, without these wonderful ladies our centre wouldn't run. Their commitment to ensuring continuity of service & making parents & children feel safe through a time of uncertainty, has been amazing.

To acknowledge the contributions of past and present members of staff, Board members and other dedicated volunteers in 2020, I am delighted to present this Annual Report as a reflection on some of our achievements and progress to date.

Julie Zajer

Chairperson

FINANCES

Treasurers Report

It is with pleasure that I provide you with the Treasurer's report for the period ended 31 December 2020.

The Centre experienced an increase in Playgroup income and takings from room hire derived during the period, which contributed in part to our improved earnings and positive net asset position at the end of December.

The post year-end significant event of Covid19 required timely financial attention to ensure adequate cash reserves were retained by the Centre. The Centre continues to be able to meet its present and future obligations, whilst retaining consistent staffing levels.

With normal activity returning here in WA, the Centre is looking to solidify its financial position to ensure it can deal with further unforeseen events. Remaining nimble through strategic planning and strong reporting continues to be considered crucial to the committee and Centre Management.

I would like to say thank you to Chairperson, Julie Zajer, and the members of the committee for their support and encouragement.

Julian Eve

Treasurer

Statement of Financial position

As of 31 December 2020

	2020 \$	2019 \$
ASSETS		
CURRENT ASSETS		
Cash and Cash Equivalents	175,570	79,101
Trade and Other Receivables	852	6,351
Inventory	167	1,135
Prepayments	5,862	3,124
	-----	-----
TOTAL CURRENT ASSETS	182,451	89,711
	-----	-----
NON-CURRENT ASSETS		
Property, Plant and Equipment	2,441	5,386
Right of Use Assets	4,734	0
	-----	-----
TOTAL NON-CURRENT ASSETS	7,175	5,386
	-----	-----
TOTAL ASSETS	189,626	95,097
	-----	-----
LIABILITIES		
CURRENT LIABILITIES		
Trade and Other Payables	2,886	11,707
Employee related payables	13,484	10,470
Provision for Employee Entitlements	9,140	2,701
Income in advance	33,640	0
Right of Use Lease liabilities	1,784	0
	-----	-----
TOTAL CURRENT LIABILITIES	60,934	24,878
	-----	-----
NON-CURRENT LIABILITIES		
Right of Use Lease liabilities	3,134	0
	-----	-----
TOTAL NON-CURRENT LIABILITIES	3,134	0
	-----	-----
TOTAL LIABILITIES	64,068	24,878
	-----	-----
NET ASSETS	125,558	70,219
	=====	=====
ACCUMULATED FUNDS		
Opening Balance	70,219	45,899
Net Surplus (Deficit)	55,283	24,320
Prior year adjustment	56	0
	-----	-----
TOTAL ACCUMULATED FUNDS	125,558	70,219
	=====	=====

Statement of income and expenditure

For the Year Ended 31 December 2020

	2020 \$	2019 \$
Income		
Centre Income (regular & casual user)	31,858	46,387
DFC Funding	102,273	133,952
3's Plus Income	53,595	76,036
Bank Interest	7	8
Playgroup Income	13,480	13,755
Fundraising	0	994
3's Plus T-Shirts	115	418
Clinic income	4,367	11,301
Other income	50	237
ATO Jobkeeper	94,500	0
Subsidy		
ATO Cashflow Boost	32,035	0
Government Incentive		
Total Income	332,280	283,088
Expenditure		
Audit Fees	1,800	1,800
Administration	43,083	47,139
Employment	199,311	157,741
Leave Entitlement Expense	6,439	2,120
Cleaning and Maintenance	21,485	38,616
Utilities	2,799	6,109
3's Plus Expenses	1,672	4,769
Playgroup Expenses	408	474
Total Expenditure	276,997	258,768
Operating Surplus (Deficit)	55,283	24,320
Other Comprehensive Income	0	0
Total Comprehensive Income	55,283	24,320

OPERATIONS

Program and services report

Like many others, the Covid-19 pandemic significantly affected the operations of Joondalup Family Centre in the first six months of the year. In fact, activities in this period were about 55% of what they were in the previous 6-month period with around 40% of the number of participants.

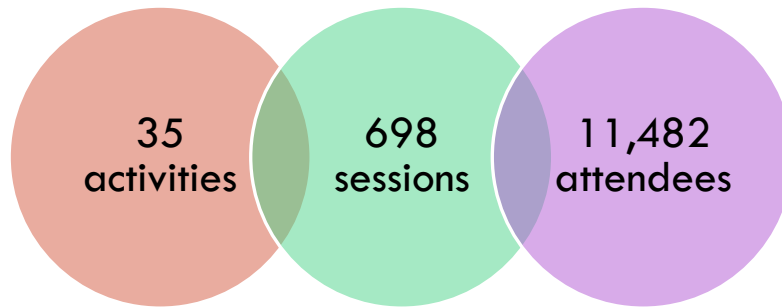
Fortunately, the Centre continued to stay open with the financial support from the Federal Government via the JobKeeper payments only closing for State Government imposed restrictions. Programs and services slowly started building during stage 2 and 3 restrictions with our Children's services programs running again, albeit across reduced days with reduced numbers. With a strong commitment to maintaining our valuable staff, we were able to redeploy staff into reviewing and improving current programs and services, and researching and developing potential new programs under the Empowering Communities grant. The Centre has been able to offer some great new programs this year to provide opportunities for individuals to build social connections within the community, feel safe and build new skills and knowledge. Two of these are mentioned further below.

The first of these programs was stage one of a community garden. A dedicated group of 5 – 6 community volunteers attended the Centre once a week to assist with clearing an area and planting a variety of fruit, vegetables and herbs in the ground and into planter boxes. The community garden generated a really nice community feel and buzz at the Centre. Volunteers ages ranged from 3-year-olds with their mothers up to an 80-year-old grandmother. Many people walking past the Centre would stop to find out what was going on, and some on their morning walks, would stop and help. This lasted for a full term and ended with some tea, coffee and cake to celebrate. I would like to thank the volunteers, Bunnings Joondalup and The City of Joondalup for their kind donations of time and products towards this project.

A second program developed at the beginning of the year was a Playgroup specifically for Aboriginal and Torres Strait Islander (ATSI) peoples. Called Nyit Djena (Little Feet), this program was developed in collaboration with the Child and Adolescent Health Service to provide targeted health and wellbeing support to ATSI people in our local and surrounding communities in a fun, play-based learning environment. Attendance averages from 3 – 4 families each week with children ranging from 6 months – 4 years. On occasion, older children would come if they were sick from school. This program will continue next year.

An intergenerational playgroup was planned to start mid-year but unfortunately, we did not gain enough interest in the program. This consisted of weekly themed activities that grandparents and their grandchildren could undertake together including space explorers, a sports carnival, nutrition, fairies and elves, and a dinosaur dig. We do plan to continue to look at this into next year.

Activity numbers significantly improved in the second half of the year with the number of activities and attendees more than doubling. Overall, the Centre has had a very active year in 2020.



Joondalup Family Centre is committed to supporting marginalised members of our community and are happy to report that 590 people with a disability and 239 First Nations people attended activities and services at our Centre. The free bread service offered every Thursday at the Centre is very popular with our local community, particularly our senior's groups. I would like to thank Brumby's at Candlewood for supplying the bread for this.

Joondalup Family Centre continues to work with many other organisations to deliver activities to support our local community. These include the following broad activity types:

- Arts and crafts
- Sobriety support
- Community garden
- Spiritual support
- Dance and exercise
- Parent's support
- Children's services
- Training and skill building

We could not have reached as many people as we did without their hard work and support. A list of our Centre users can be found in the Our People section. We look forward to building on our successes next year to benefit the lives of those in our local, and surrounding community.

I would like to thank all our staff and committee for their continued commitment to the Centre in what has been a very difficult operational time.

Maree Jones

Programs and Services Manager

Children's Services

Joondalup Family Centre is well known for its Early Years education programs. Our children services programs include an early learning Playgroup program for parents and their children up to 4 years old and a Pre-kindy program for 2.5 years – 4 years old. These programs were significantly affected by the Covid-19 pandemic early in the year (specifically in April and May) and significant effort from staff went into re-building numbers throughout the year. Parents were grateful of our constant communications throughout stage 1 & 2 restrictions and working with them to provide a smooth and safe transition back for their children.

Our Children's services programs continue to receive very good feedback from parents with most of our users being repeat families or friends of previous families. This can be attributed to the great staff we have.

Pre-Kindy Services

Enrolments	2 ½ years (min) to 4-year olds
Max class size	20
Sessions:	
Tuesday	9am – 2pm
Wednesday	9am – 2pm
Thursday	9am – 2pm

We welcomed Sarah Sansom in January as our Early Childhood Teacher and Educational Leader to work with the very experienced Angela Wingfield. Sarah has brought with her a passion and enthusiasm that benefits the Centre and the pre-kindy children.

The numbers below show the impact of the Covid-19 pandemic on enrolments. The April to June numbers significantly dropped while parents stayed home or found alternative arrangements for their children. In fact, the

previous Friday class was abandoned due to low numbers and we instead opted to increase each day to a 2pm finish. Staff used this quieter time to review and improve the children's services policy and procedures and improve program planning and feedback mechanisms.

George loves being at "kinda school" as he calls it.

The second half of the year saw a significant improvement in attendance numbers.

	Feb	Mar	Apr	May	Jun	Jul	Aug	Sep	Oct	Nov	Dec
Tues	40	51	9	0	28	20	54	61	45	60	33
Wed	40	39	24	31	32	25	28	36	34	44	27
Thurs	12	16	16	33	34	33	53	59	47	60	30
TOTAL	92	106	49	64	94	78	135	156	126	164	90

We had a face-to-face visit from Education and Care Regulatory Unit (ECRU) which was followed up with an online meeting regarding our assessment and rating. This provided a great opportunity to go through any questions we had regarding our methods for recording observations and reflective practices and our approach to inform our Quality Improvement Plan (QIP). Since this meeting, we have been working collaboratively on improving any areas where our rating was “Working towards” and feel confident the result will be improved rating overall at our next assessment.

Flynn absolutely loves his 2 days with you guys. He has come on so much from starting last year.

Following on from discussions with new and existing parents held this year, we are restructuring our pre-kindy program from next year to include extended hours for over 3-year-old’s (3’s Plus program), and are offering a new program on a Monday for 2 - 3-year -old’s. Called “Terrific Two’s”, this program will run from 9am - 12pm offering a reduced number of hours and revised learning format for the younger aged group.

Early Years Playgroup

Enrolments	6 months (min) to 4-year-old
Max class size	20
Sessions:	
Tuesday	9am – 11am
Wednesday	9am – 11am
Thursday	9am – 11am

During stage 1 & 2 Covid-19 Government restrictions, Playgroup ceased to operate for numerous weeks. It was not until stage 3 restrictions when Playgroup could be reinstated with reduced days and numbers. With the continued uncertainty around the Covid-19 pandemic, many parents chose not to return to the program until restrictions were lifted to stage 4.

The children and their parents have enjoyed participating in many fun activities including silkscreen painting, spray painting, nature tree collage, dress ups, intergenerational playgroup week, exciting science activities including frozen gloop, fizzy cloud dough and magic wax and dye pictures. Outdoor Explorers remains the most popular group with water play returning, beach nature trays and muddy car play all very popular activities.

We love Tammy and have a great time at Playgroup

Number of Enrolled Children Jan – Dec 2020

	Feb	Mar	Apr	May	Jun	Jul	Aug	Sep	Oct	Nov	Dec
Tues	49	65	10	21	67	28	57	62	48	64	34
Wed	35	36	12	9	40	35	66	66	38	41	20
Thurs	43	47	20	41	50	43	63	66	40	46	28
TOTAL	127	148	42	71	157	106	186	194	126	151	82

We developed a new Playgroup program this year to run on a Wednesday, so each day offers a slightly different group of activities. This may encourage people to enrol in multiple days. This will be implemented from 2021.

OUR YEAR IN PHOTOS

INTERNATIONAL DAY FOR PEOPLE WITH DISABILITY



ART CLASS



CRAFT GROUP



SENIORS WEEK



PRE-KINDY



NAIDOC WEEK



CRAFT



PRE-KINDY



COMMUNITY GARDEN



NYIT DJENA



INTERGENERATIONAL PLAYGROUP



PLAYGROUP



ART CLASS



SUSTAINABILITY WEEK



CHRISTMAS



COMMUNITY GARDEN



NYIT DJENA



YOUR SUPPORT

The continued support of and engagement with our local community is key to the future of the Joondalup Family Centre. We would like to thank you all for making 2020 an engaging and successful. Your continued support and engagement are vital to our survival. You can support us through:

- Engaging with us on Social Media
- Becoming a Committee Member by contacting the Secretary
- Registering your interest as a program volunteer
- Participating in one of our programs or services offered at the JFC
- Facilitating your community services or workshops at the JFC
- Hiring our facilities for your next Children's Party or business venture
- Spreading the word of the JFC Programs and Services with your neighbours, friends, and family
- Provide us with valuable feedback.

Contact Us

25 Jolstra Crescent Joondalup WA 6027
(08) 9300 3036

www.joondalupfamilycentre.com.au



Office Hours: Weekdays 9am – 1pm

Management Committee:

committee@joondalupfamilycentre.com.au

Programs and Services Manager:

Maree Jones

manager@joondalupfamilycentre.com.au

Pre-Kindergarten:

Sarah Sansom

kindergarten@joondalupfamilycentre.com.au

Playgroup Coordinator:

Tammy Lo Biundo

playgroup@joondalupfamilycentre.com.au

General Enquiries

admin@joondalupfamilycentre.com.au



Come and join our family