



# ANNUAL REPORT

## January – December 2021





Joondalup Family Centre wishes to acknowledge and thank the Traditional Owners of the Land, the Mooro people of the Noongar nation on which we meet, work, and live. We acknowledge the Elders of the past, present and future.

# TABLE OF CONTENTS

About us _____	4
Board Members & Employees _____	5
Our supporters _____	6
Centre Users _____	6
Organisational structure _____	7
Chairpersons report _____	8
Finances _____	9
Treasurers Report _____	9
_____	10
Operations _____	12
Program and services report _____	12
Children's Services _____	14
Pre-Kindy Services _____	14
Early Years Playgroup _____	16
Our year in photos _____	17
YOUR SUPPORT _____	20

# ABOUT US

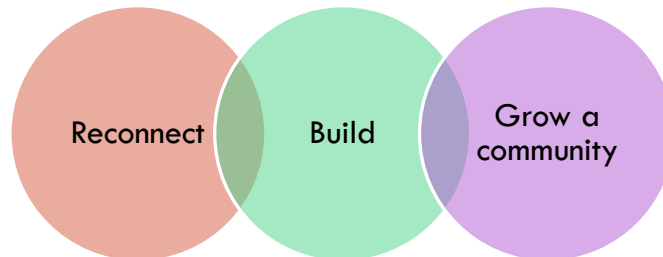
## Our history

The Joondalup Family Centre Inc. (JFC) is a not-for-profit community-based organisation established in 1992 to offer a range of programs and services to the people of Joondalup and surrounding areas.

A voluntary Management Committee, comprised of people from the local community, provides governance and leadership to JFC operations. The Management Committee has the vital role of providing strategic direction, support and collaboration to ensure that the Centre is able to be effective, efficient and sustainable and ensure necessary funding and oversee the high professional standards expected within the organisation.

JFC's programs, services and facilities are generously supported by the WA Department of Communities. The organisation also receives ongoing support from our peak body, Linkwest and the Department of Communities Educational Care and Regulatory Unit.

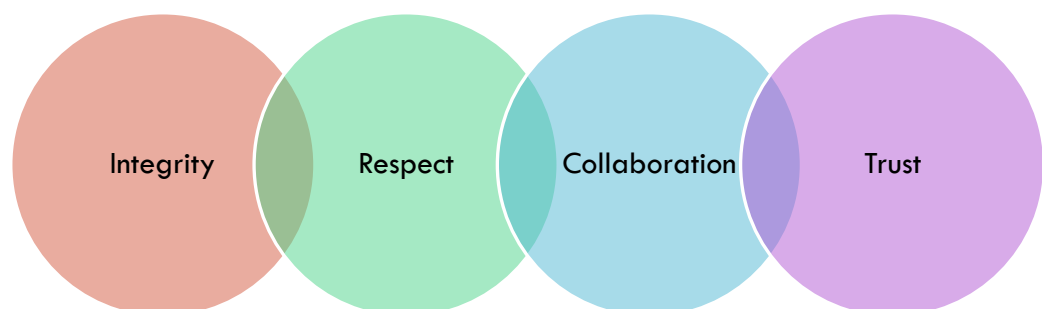
## Our Vision



## Our Purpose

Our purpose is to connect, inspire and support our community to grow together through the delivery of quality community and education programs that are inclusive and build cohesiveness.

## Our Values



# BOARD MEMBERS & EMPLOYEES

JANUARY - DECEMBER 2021

## Board Members

Chairperson

Julie Zajer

Vice Chairperson

Pasan Ganegama/ Francois Eckard

Secretary

Natasha Williams/ Teresa Gastevcih

Treasurer

Lashan Wanigasekera

General Members

Kate Campbell

Teresa Gastevich

Takavengwa Marindo

Francois Eckard

Nathan Pickering

Felicia Vlad

Ivan Vujcic

Mel Wright

Anna Zia

## Past Board Members

General Members

Yvonne Hartzler

Pedus Eweana

Sara Browne

Suzanne Christie

Julian eve

## Employees

Programs and Services Manager

Maree Jones/ Chloe Scott

Pre-Kindergarten Educational Leader

Sarah Sansom

Pre-Kindergarten Support Educator

Angela Wingfield

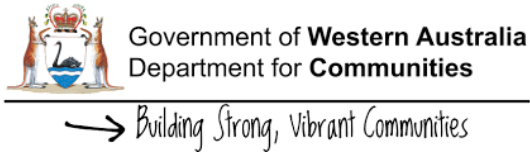
Pre-Kindergarten Support Educator

Tammy Lo Biundo

Administration and Programs Coordinator

Melissa Natoli

## OUR SUPPORTERS



*"Joondalup Family Centre would like to thank the funders, and agencies that supported us in 2021".*

## CENTRE USERS

The centre has several people who use it on a casual basis for one off meetings or birthday parties throughout the year. Below are some of our regular community groups who run weekly activities to benefit our local community:

Air Brush Venturi

Art Therapy Connect

All Stars for Autism

Autism WA

E2 Young Engineers

Child and Adolescent Health Service

Crafty Chix

Crafty Foxes

Dickie Architects

Forward in Faith Ministries

Fusion Creative

Alcoholics Anonymous

Kobda Bioenergetics

LitCity

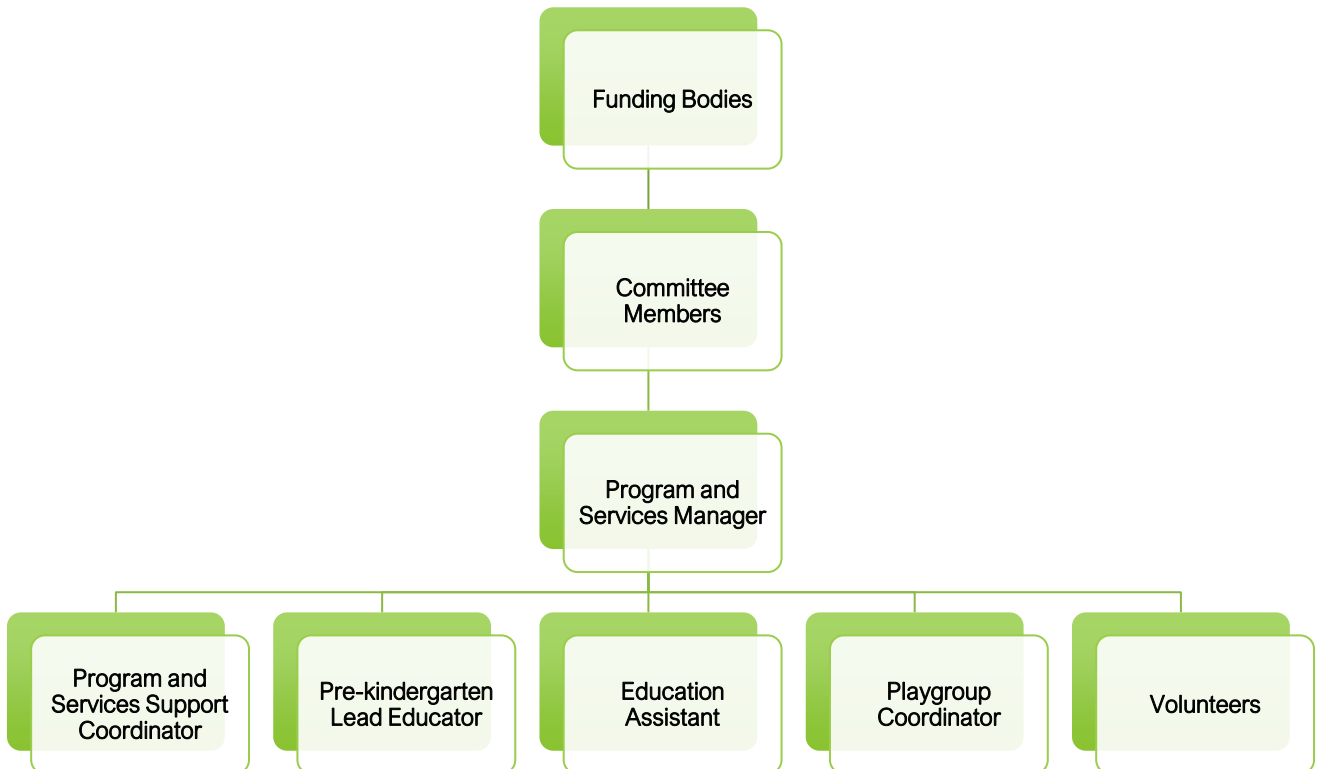
Narcotics Anonymous

Ngala Parenting Connections

Spectrum Therapy

Viva Speech Pathology

# ORGANISATIONAL STRUCTURE



# CHAIRPERSONS REPORT

COVID-19 again impacted JFC, however with lessons learnt in 2020 and our staff's unwavering commitment to serving our community, children & families, we again adapted to the ever-changing landscape that is COVID-19, we reflected and forged ahead with new and exciting ways of working, helping our community, families and users with new initiatives, collaborations, and exciting projects.

I am again humbled with the outstanding work of all connected to Joondalup Family Centre. In a year of lockdowns, mandates, masks & vaccines our educators found new ways to bring smiles to our children's faces which culminated in a wonderful Christmas Party where over 80 parents, grandparents, board & staff celebrated, their achievements throughout the year.

The board again focused on maintaining our commitment to our staff & users.

We created a Risk Sub Committee this year, this subcommittee works to ensure that in conjunction with our Centre Admin staff & other subcommittee members, we provide oversight of our Risk Management Policies & Procedures.

Whilst our achievements in 2021 have been many, we acknowledge that there is still more work to be done to improve our organisational capability and impart new ways of working.

As 2021 drew to a close we reflected on a year that was, the highs & lows, the wins and losses – what we took away was that we had a fantastic & sometimes hard year but I can guarantee that 2022 is going to be fabulous, so many new initiatives, projects starting and some super exiting plans coming our way.

I would like to thank our Centre Users for their continued support of JFC, we look forward to building on those partnerships and fostering new and exciting partnerships in 2022.

I would like to also acknowledge the board members and staff that said good-bye to JFC throughout the year and thank them for their time with us.

Again, thank you to Maree & staff for their unwavering support of the centre, commitment to our vision, and ensuring that the children & families had a good year.

To acknowledge the contributions of past and present members of staff, Board members and other dedicated volunteers in 2021, I am delighted to present this year's Annual Report as a reflection on some of our achievements.

**Julie Zajer**

Chairperson



# FINANCES

## Treasurers Report

It is with pleasure that I provide you with the Treasurer's report for the period ended 31 December 2021.

The Centre experienced an increase in the 3s plus program income as well as takings from room hire derived during the period, which contributed in part to our improved earnings and positive net asset position at the end of December.

The post year-end significant event of Covid19 required timely financial attention to ensure adequate cash reserves were retained by the Centre. The Centre continues to be able to meet its present and future obligations, whilst retaining consistent staffing levels.

Noting whilst total income reflects a reduction from financial year 2020, \$126,535 was received from government subsidies and cash boosts that was available.

With normal activity returning here in WA, the Centre is looking to solidify its financial position to ensure it can deal with further unforeseen events. This has been reflected from the our total income increasing to \$280,752 from the previous year which was \$205,745 when the government subsidies are excluded.

We have engaged Traction Financial Chartered Accountants going forward to ensure strategic planning and strong reporting will continue to be the Committee and the Centre Managements focus.

I would like to thank our Chairperson, Julie Zajer and the members of the committee for their continuous support and encouragement

**Lashan Wanigasekera**

Treasurer

**JOONDALUP FAMILY CENTRE INC.  
STATEMENT OF FINANCIAL POSITION**

**AS AT 31 DECEMBER 2021**

	NOTES	2021 \$	2020 \$
<b>ASSETS</b>			
<b>CURRENT ASSETS</b>			
Cash and Cash Equivalents	2	202,039	175,570
Trade and Other Receivables	3	2,591	852
Inventory		167	167
Prepayments		5,612	5,862
		-----	-----
<b>TOTAL CURRENT ASSETS</b>		<b>210,409</b>	<b>182,451</b>
<b>NON-CURRENT ASSETS</b>			
Property, Plant and Equipment	4	1,489	2,441
Right of Use Assets		2,902	4,734
		-----	-----
<b>TOTAL NON-CURRENT ASSETS</b>		<b>4,391</b>	<b>7,175</b>
		-----	-----
<b>TOTAL ASSETS</b>		<b>214,800</b>	<b>189,626</b>
		-----	-----
<b>LIABILITIES</b>			
<b>CURRENT LIABILITIES</b>			
Trade and Other Payables	5	8,248	2,886
Employee related payables	6	16,279	13,484
Provision for Employee Entitlements		4,637	9,140
Income in advance		43,169	33,640
Right of Use Lease liabilities		1,933	1,784
		-----	-----
<b>TOTAL CURRENT LIABILITIES</b>		<b>74,266</b>	<b>60,934</b>
<b>NON-CURRENT LIABILITIES</b>			
Right of Use Lease liabilities		1,200	3,134
		-----	-----
<b>TOTAL NON-CURRENT LIABILITIES</b>		<b>1,200</b>	<b>3,134</b>
		-----	-----
<b>TOTAL LIABILITIES</b>		<b>75,466</b>	<b>64,068</b>
		-----	-----
<b>NET ASSETS</b>		<b>139,334</b>	<b>125,558</b>
		=====	=====
<b>ACCUMULATED FUNDS</b>			
Opening Balance		125,558	70,219
Net Surplus (Deficit)		13,700	55,283
Prior year adjustment		76	56
		-----	-----
<b>TOTAL ACCUMULATED FUNDS</b>		<b>139,334</b>	<b>125,558</b>
		=====	=====

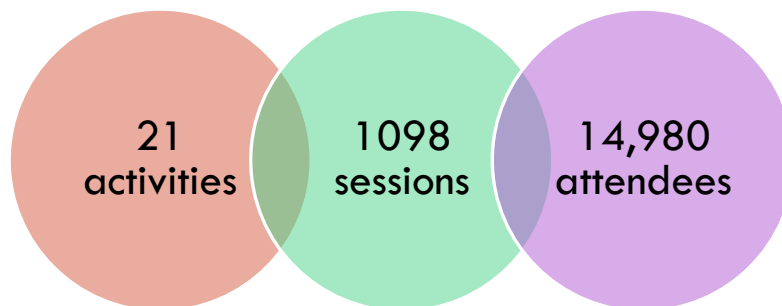
**JOONDALUP FAMILY CENTRE INC.**  
**STATEMENT OF PROFIT OR LOSS AND COMPREHENSIVE INCOME**  
**FOR THE YEAR ENDED 31 DECEMBER 2021**

	2021	2020
	\$	\$
<b>Income</b>		
Centre Income (regular & casual user)	42,832	31,858
DFC Funding	135,435	102,273
3's Plus Income	89,495	53,595
Bank Interest	11	7
Playgroup Income	9,291	13,480
Fundraising	671	0
3's Plus T-Shirts	55	115
Clinic income	2,574	4,367
Other income	388	50
ATO Jobkeeper Subsidy	-	94,500
ATO Cashflow Boost Government Incentive	-	32,035
	-----	-----
<b>Total Income</b>	<b>280,752</b>	<b>332,280</b>
	-----	-----
<b>Expenditure</b>		
Audit Fees	1,800	1,800
Administration	53,801	43,083
Employment	186,891	199,311
Leave Entitlement Expense	(7,681)	6,439
Cleaning and Maintenance	23,484	21,485
Utilities	6,307	2,799
3's Plus Expenses	2,432	1,672
Playgroup Expenses	18	408
	-----	-----
<b>Total Expenditure</b>	<b>267,052</b>	<b>276,997</b>
	-----	-----
<b>Operating Surplus (Deficit)</b>	<b>13,700</b>	<b>55,283</b>
	-----	-----
Other Comprehensive Income	-	-
	-----	-----
<b>Total Comprehensive Income</b>	<b>13,700</b>	<b>55,283</b>
	=====	=====

# OPERATIONS

## Program and services report

Covid-19 pandemic continues impact Joondalup Family Centre with 2 lockdowns in April 2021 and in June 2021 as well as many restrictions that have been put in place which means we have to adapt to these changes. Due to Mandatory vaccination requirements, mask wearing and maximum room capacity restrictions we saw a slight drop in the amount of activities run in the centre in 2021 but we did increase the amount of sessions held and attendees that came to the centre in 2021 by about 30%.



2021 saw a few staffing changes:

1. Sarah Sansom finished in the pre-kindy in Dec 2021
2. Tammy Lo Biundo moved from Playgroup Coordinator to Education Assistant in Pre-kindy.
3. Maree Jones (Programs and Services manager) left in Nov 2021
4. Melissa Natoli employed as Administration and Programs coordinator in Nov 2021.
5. Chloe Scott employed as Centre Manager in Nov 2021.

2022 is looking to be an exciting year with a new look Joondalup Family Centre Team.

Joondalup Family Centre continues to work with many organisations to deliver activities to support our local community some of these activities include:

- Craft groups
- Children's Art Classes
- Support Groups
- Religion Groups
- Exercise class
- Mentoring program
- Playgroup
- Autism Groups

In Term 3 2021 Joondalup Family Centre in collaboration with All Stars with Autism started a Art Therapy class on a Saturday afternoon. The art therapy program that enables autistic children to develop their creative skills in a supportive, safe environment.

The program is facilitated by Larah from Art Therapy Connect. Larah's an incredibly talented Art Therapist who uses lots of mindfulness and breathing techniques to help children explore their creativity. This program has been highly successful with a waiting list for 2022. Joondalup Family Centre was able to secure a grant in late 2021 to help fund the program again in 2022.

Due to Child and Adolescent Health Service no longer being able to help run the Nyat Djena playgroup this finished in May 2021. This is a highly needed program for the City of Joondalup as it is creating a safe, fun environment for aboriginal children to explore and learn ready for them to start school. In 2022 we will be trying to start this program up again from Term 2 by running the program in house.

The free bread service offered every Thursday from Brumby's Candlewood at the Centre is still very popular with our local community.

Towards the end of 2021 we have reintroduced and introduced new community projects

- The free little library – Where you can take a book, read it and return to exchange for another book
- Grow Free cart – Where community members can bring home grown items to share with the community
- Containers for Change – We are collecting container for the community to raised funds for Joondalup Family Centre.

I would like to thank all our staff and committee for their continued support and hard work to Joondalup Family centre in 2021.

I am looking forward to what 2022 will bring for the Centre.

**Melissa Natoli**

Acting Centre Manager

## Children's Services

Our children services programs include an early learning Playgroup program for parents and their children up to 4 years old and Pre-kindy programs for 2 years – 4 years old.

Our Children's services programs continue to receive very good feedback from parents with most of our users being repeat families or friends of previous families.

### Pre-Kindy Services

In 2021 we introduced a new pre-kindy program Terrfic 2's for children 2 to 3 years old on a Monday morning. This shorter session is great for those who are not used to being away from parents. It is a great stepping stone to the pre-kindy program.

Enrolment steadily increased throughout the year and by the end of 2021 most of our classes were nearly at capacity.

We had a face-to-face visit from Education and Care Regulatory Unit (ECRU) for our next assessment in Oct 2021. Our overall rating was improved to Meeting all quality standards, which is a great result and thank you to everyone that helped get this amazing result.

In December 2021 we said goodbye to Sarah Sansom the Pre-Kindergarten Educational Leader. In 2022 we will be employing a new Early Childhood Teacher ready for term 1.

Enrolments	<b>Mon - 2 years to 3 year olds</b> <b>Tues, Wed, Thurs – 3 to 4 year olds</b>
Max class size	<b>Mon – 10</b> <b>Tues, Wed, Thurs - 20</b>
Sessions:	
<b>Monday</b>	9am – 12pm
<b>Tuesday</b>	9am – 2pm
<b>Wednesday</b>	9am – 2pm
<b>Thursday</b>	9am – 2pm

## Number of Enrolled Children Jan – Dec 2021

	Feb	Mar	Apr	May	Jun	Jul	Aug	Sep	Oct	Nov	Dec
Mon	6	8	7	9	9	6	6	6	7	7	7
Tues	7	8	8	9	10	14	17	18	19	20	20
Wed	9	9	11	13	13	14	14	15	16	16	16
Thurs	9	9	11	12	12	15	16	16	18	18	18
<b>TOTAL</b>	<b>31</b>	<b>34</b>	<b>37</b>	<b>43</b>	<b>44</b>	<b>49</b>	<b>53</b>	<b>55</b>	<b>60</b>	<b>61</b>	<b>61</b>

## Early Years Playgroup

Thursday's Outdoor Explorers remains the most popular playgroup we offer which you can see below with steady enrollment numbers for 2021.

Tammy Lo Biundo was appointed a new position with Joondalup Family Centre in Pre-kindy so was unable to coordinate the playgroup from October 2021. We had a few casual staff members help fill in for the rest of 2021. In 2022 playgroup will be coordinated by the Administration and Programs Coordinator.

Unfortunately due low enrolment numbers Tuesday's playgroup was stopped June 2021. You can see from September 2021 enrollment numbers declined in both Wednesday and Thursday's playgroups so it was decided to merge Wednesday and Thursday playgroups in 2022. In 2022 there will only be a Friday morning playgroup.

The children and their parents have enjoyed many different activities over the last year which included Water play, mud painting, leaf painting, toothbrush painting, sensory trays and multiple celebration activities for different events.

Enrolments	<b>6 months (min) to 4-year-old</b>
Max class size	<b>20</b>
Sessions:	
<b>Tuesday</b>	9am – 11am
<b>Wednesday</b>	9am – 11am
<b>Thursday</b>	9am – 11am

**Number of Enrolled Children Jan – Dec 2021**

	Feb	Mar	Apr	May	Jun	Jul	Aug	Sep	Oct	Nov	Dec
Tues	7	8	9	7	-	-	-	-	-	-	-
Wed	9	9	7	6	7	10	7	7	5	6	8
Thurs	18	18	15	17	16	16	17	17	13	13	10
<b>TOTAL</b>	<b>34</b>	<b>35</b>	<b>31</b>	<b>30</b>	<b>23</b>	<b>26</b>	<b>24</b>	<b>24</b>	<b>18</b>	<b>19</b>	<b>18</b>



# OUR YEAR IN PHOTOS

## PRE-KINDY



## PLAYGROUP



## NAIDOC WEEK



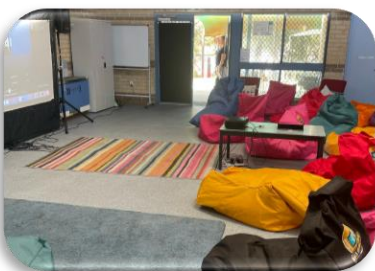
Art Class



CRAFT GROUPS



ALL STARS FOR AUTISM GROUP



### CONTAINERS FOR CHANGE



### FREE LITTLE LIBRARY



### BRUMBY'S BREAD DAY



### CHRISTMAS



# YOUR SUPPORT

The continued support of and engagement with our local community is key to the future of the Joondalup Family Centre. We would like to thank you all for making 2020 an engaging and successful. Your continued support and engagement are vital to our survival. You can support us through:

- Engaging with us on Social Media
- Becoming a Committee Member by contacting the Secretary
- Registering your interest as a program volunteer
- Participating in one of our programs or services offered at the JFC
- Facilitating your community services or workshops at the JFC
- Hiring our facilities for your next Children's Party or business venture
- Spreading the word of the JFC Programs and Services with your neighbours, friends, and family
- Provide us with valuable feedback.

## Contact Us

25 Jolstra Crescent Joondalup WA 6027  
(08) 9300 3036

[www.joondalupfamilycentre.com.au](http://www.joondalupfamilycentre.com.au)



Office Hours: Weekdays 9am – 1pm

### Management Committee:

[committee@joondalupfamilycentre.com.au](mailto:committee@joondalupfamilycentre.com.au)

### Programs and Services Manager:

[manager@joondalupfamilycentre.com.au](mailto:manager@joondalupfamilycentre.com.au)

### Pre-Kindergarten:

[kindergarten@joondalupfamilycentre.com.au](mailto:kindergarten@joondalupfamilycentre.com.au)

### General Enquiries

[admin@joondalupfamilycentre.com.au](mailto:admin@joondalupfamilycentre.com.au)



**Come and join our family**