



ANNUAL REPORT

January – December 2022





Joondalup Family Centre wishes to acknowledge and thank the Traditional Owners of the Land, the Mooro people of the Noongar nation on which we meet, work, and live. We acknowledge the Elders of the past, present and future.

TABLE OF CONTENTS

About us _____	4
board members & employees _____	5
Our supporters _____	6
Centre Users _____	7
Organisational structure _____	8
Chairpersons report _____	9
Finances _____	10
Treasurers Report _____	10
_____	Error! Bookmark not defined.
Operations _____	13
Program and services report _____	13
Children's Services _____	15
Pre-Kindy Services _____	15
Early Years Playgroup _____	17
Our year in photos _____	18
YOUR SUPPORT _____	23

ABOUT US

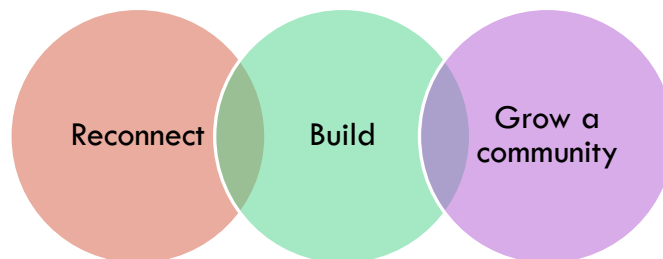
Our history

The Joondalup Family Centre Inc. (JFC) is a not-for-profit community-based organisation established in 1992 to offer a range of programs and services to the people of Joondalup and surrounding areas.

A voluntary Management Committee, comprised of people from the local community, provides governance and leadership to JFC operations. The Management Committee has the vital role of providing strategic direction, support and collaboration to ensure that the Centre is able to be effective, efficient and sustainable and ensure necessary funding and oversee the high professional standards expected within the organisation.

JFC's programs, services and facilities are generously supported by the WA Department of Communities. The organisation also receives ongoing support from our peak body, Linkwest and the Department of Communities Educational Care and Regulatory Unit.

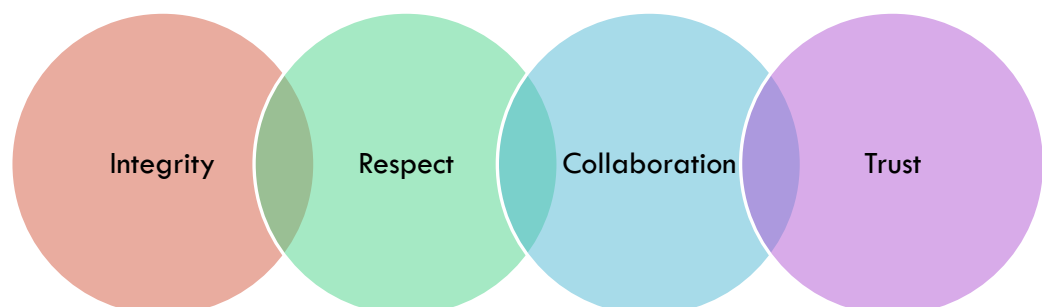
Our Vision



Our Purpose

Our purpose is to connect, inspire and support our community to grow together through the delivery of quality community and education programs that are inclusive and build cohesiveness.

Our Values



BOARD MEMBERS & EMPLOYEES

JANUARY - DECEMBER 2022

Board Members

Chairperson

Julie Zajer

Vice Chairperson

Francois Eckard

Secretary

Teresa Gastevcih

Treasurer

Lashan Wanigasekera

General Members

Takavengwa Marindo

Felicia Vlad

Ivan Vujicic

Mel Wright

Past Board Members

General Members

Kate Campbell

Nathan Pickering

Anna Zia

Employees

Programs and Services Manager

Chloe Scott

Administration and Programs Coordinator

Melissa Natoli

Pre-Kindy Educational Leader and Early Childhood teacher.

Evie Isaacson

Pre-Kindy Education Assistant

Angela Wingfield

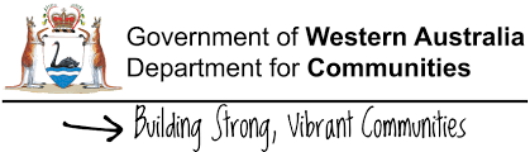
Nicola Riley

Tammy Lo Biundo

Sarah Hough

Anom Surani

OUR SUPPORTERS



Ngala

Parenting with Confidence

"Joondalup Family Centre would like to thank the funders, and agencies that supported us in 2022".

CENTRE USERS

The center has several people who use it on a casual basis for one off meetings or birthday parties throughout the year. Below are some of our regular community groups who run weekly activities to benefit our local community:

Air Brush Venturi

Art Therapy Connect

All Stars for Autism

Autism WA

E2 Young Engineers

Child and Adolescent Health Service

Food Sensation

Chatty Café

Dickie Architects

Forward in Faith Ministries

Fusion Creative

Alcoholics Anonymous

Kobda Bioenergetics

LitCity

Narcotics Anonymous

Ngala Parenting Connections

Spectrum Therapy

Women's Health

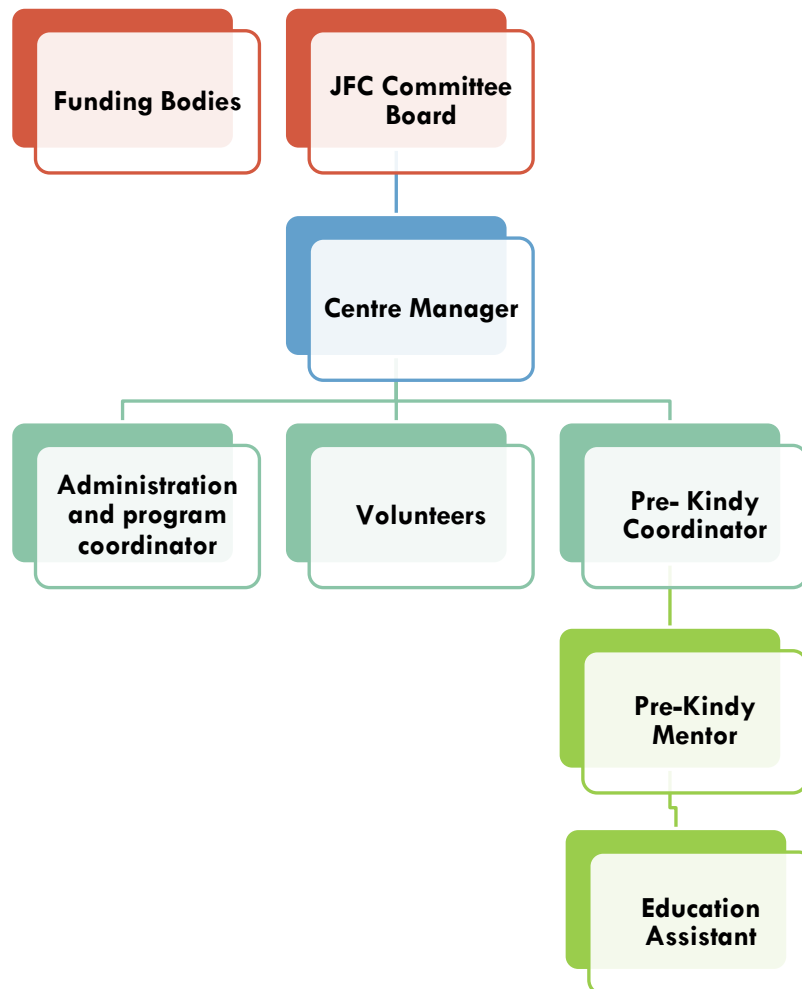
Viva Dance

Best beginnings playgroup

Nyat Diena Playgroup

Joondalup family Center playgroup

ORGANISATIONAL STRUCTURE



CHAIRPERSONS REPORT



Chairperson

Julie Zajer

I am again humbled with the outstanding work of all connected to Joondalup Family Centre.

Our staff are the experts in what they do. Without their dedication to our families, centre users and community, their innovative ideas, along with their collaboration skills and their willingness to grow and learn, Joondalup Family Centre would not be able to build resilience as effectively as we do. Our staff truly embody our learning culture, and I'm proud to publicly acknowledge our staff on behalf of the Joondalup Family Centre Board, for their efforts over the last 12 months.

COVID-19 again impacted Joondalup Family Centre, however with lessons learnt in 2021 and our staff's unwavering commitment, we again adapted to the ever-changing landscape, we reflected and forged ahead, helping our community, families and users with new initiatives, collaborations, and exciting projects.

As I reflect on 2022, a year that truly had a lot of highs, we were fortunate to be granted some Funding opportunities that enabled us to throughout the year – we also saw many new initiatives, projects and a fabulous new Nature Play backyard.

By working together, we can build a stronger community that is able to not just weather external events but prosper as well.

I would like to thank our Centre Users for their continued support of Joondalup Family Centre, we look forward to building on those partnerships and fostering new and exciting partnerships in 2023.

To the board members and staff that said good-bye to Joondalup Family Centre throughout the year I would like to thank them for their time with us.

We look forward to continuing to progress partnerships with individuals and organisations that share our values. Thank you to Chloe & staff for their unwavering support of the center, commitment to our vision, and ensuring that the children & families had a good year.

As we head into our 30th year, I want to thank each Board member who has a skill set that is truly valued and has enabled Joondalup Family Centre to have best practice governance and adaptability. I truly believe Joondalup Family Centre is on a continued path of creating enduring resilience in our community, and I am excited to see what lays in store for the future for our organization.

I am delighted to present this year's Annual Report as a reflection on some of our achievements.

FINANCES

Treasurers Report



Treasurer

Lashan Wanigasekera

"It is with pleasure that I provide you with the Treasurer's report for the period ended 31 December 2022. I would like to acknowledge the hard work the staff have done, which has seen our income from grants increase by 120% which enabled the centre to spend this fund on our members by upgrading and providing new facilities for our members, such as the kitchen, bathrooms, and playground. In July the Centre was granted CCS (Childcare subsidy) and we altered our operating time to suit our members needs, which has now reflected in an increase in our 3s plus income by 60%. Noting whilst total income reflects majority of income earned was from our grants, the continued increase in 3s plus income is expected to keep the centre growing appropriately. The Centre continues to be able to meet its present and future obligations, whilst retaining consistent staffing levels. The centre continues to solidify its financial position as the engagement from the community increases and our funds are used for the benefit of our members. We continue to engage with Traction Financial Chartered Accountants to ensure strategic planning and strong reporting will continue to be the Committee and the Centre Management's focus. I would like to thank our Chairperson, Julie Zajer and the members of the committee for their continuous support and encouragement and thank you to the staff at the centre who continue to make this centre a success through their kindness and commitment towards our members. "

STATEMENT OF FINANCIAL POSITION

JOONDALUP FAMILY CENTRE INC

As at 31 December 2022

	NOTES	31 DEC 2022	31 DEC 2021
ASSETS			
CURRENT ASSETS			
Cash and Cash Equivalents	2	182,942	202,039
Trade and Other Receivables	3	1,690	2,591
Inventory		167	167
Prepayments		9,371	5,612
Total CURRENT ASSETS		194,170	210,409
NON-CURRENT ASSETS			
Property, Plant and Equipment	4	114,266	1,508
Right of Use Assets		1,070	2,902
Total NON-CURRENT ASSETS		115,336	4,411
Total ASSETS		309,506	214,820
LIABILITIES			
CURRENT LIABILITIES			
Trade and Other Payables	5	11,762	8,248
Employee Related Payables	6	15,178	19,458
Income in Advance		7,996	43,169
Provision for Employee Entitlements		9,820	1,458
Right of Use Lease Liabilities		1,202	1,933
Total CURRENT LIABILITIES		45,958	74,266
NON-CURRENT LIABILITIES			
Right of Use Lease Liabilities		-	1,202
Total NON-CURRENT LIABILITIES		-	1,202
Total LIABILITIES		45,958	75,468
Net Assets		263,549	139,353
ACCUMULATED FUNDS			
Opening Balance		139,353	125,632
Current Year Earnings		124,196	13,721
Total ACCUMULATED FUNDS		263,549	139,353

STATEMENT OF PROFIT OR LOSS AND COMPREHENSIVE INCOME

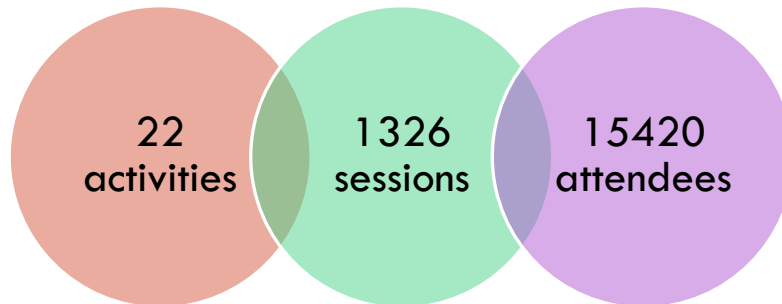
JOONDALUP FAMILY CENTRE INC

For the year ended 31 December 2022

	NOTES	2022	2021
Income			
Bank Interest		13	10
Centre Income		43,263	42,832
Clinic Income		3,893	2,574
DFC Funding		301,748	135,436
Donations		1,500	-
Fundraising		4,671	671
Other Income		1,535	389
Playgroup Income		5,117	9,291
3-s Plus Income		145,165	89,550
Total Income		506,906	280,752
Total Income			
		506,906	280,752
Expenditure			
Administration Fee		88,391	53,781
Audit Fees		1,900	1,800
Cleaning and Maintenance		28,330	23,484
Commission Expense		936	-
Employment Costs		243,606	186,891
Leave Entitlement Expense		7,429	(7,681)
Playgroup Expenses		231	18
Utilities		6,144	6,307
3's Plus Expense		5,744	2,432
Total Expenditure		382,710	267,032
Operating Surplus/(Deficit)			
		124,196	13,721
Total Comprehensive Income			
		124,196	13,721

OPERATIONS

Program and services report



2022 saw staffing changes:

1. Evie Issacson (Pre-Kindy Teacher) finished November 2022
2. Tammy Lo Biundo (Education Assistant) Finished October 2022
3. Angela Wingfield (Education Assistant) Finished August 2022
4. Chloe Scott went on Maternity leave March to August 2022 and Mel Natoli stepped into acting centre manager role.
5. We Welcomed lots of new faces to the team and built our casual pool.

2023 is looking to be an exciting year with a fresh committed team driving the center who are very passionate about their roles at Joondalup family Center

Joondalup Family Centre continues to work with many organizations to deliver activities to support our local community some of these activities include:

- Craft groups
- Children's Art Classes
- Support Groups
- Religion Groups
- Exercise class
- Mentoring program
- Playgroup
- Autism Groups

Joondalup family Center had a year with many successes to celebrate, in June we extended our Pre-Kindy hours to meet an enormous of the community and families. We applied for and got approved for the Child Care Subsidy which the needs of the families help our families with the cost of our pre-Kindy program. Our Pre-Kindy numbers doubled, and we had lots of new enrolments with many new families joining our program.

We received a lotterywest grant of \$95,000 to improve our outdoor play space and make it more natural and nurturing for the children and community.

We were lucky enough to receive a Grant from the City of Joondalup to be able to carry out our Nya Diena Playgroup to run weekly sessions for 6 months. Nyat Djena (Little Feet) is a cultural playgroup offered free of charge to young aboriginal families. The playgroup will be a fun, creative, safe learning environment for the children to explore and develop much needed fine and gross motor skills, Social skills, Language development and everyday life skills.

We also received a Grant from Healthways to run a weekly Chatty Café for the local community, We provided an open invitation for community member from all walks of life to congregate at Joondalup Family Centre and have a chat over a cup of coffee or Tea and morning tea. We charged \$1 per coffee/tea sold and \$2 per morning tea to help pay for consumables required eg Coffee, Tea, Milk, Sugar and morning tea.

We were lucky enough to be able to employ two autistic mentors from Allstars autism to serve tea and coffee to the community.

It's been a huge year with many different grants being approved and the center being turned around.

We have had many upgrades to the center, a new kitchen, painting of the whole center, playground upgrades, bathroom upgrades. The center is looking amazing.

We now have our urban pantry up and running for the local community to donate and take items they may need. We have partnered with Second Bite and we pick up weekly collections on Wednesday and Sundays.

We have had lots of new center users join our community running weekly classes for the local community.

We can't wait to see what next year is going to bring watch this space and keep tuned. We look forwards to seeing you at a session soon.

Chloe Scott
Centre Manager

Children's Services

Our Children Services programs include an early learning program for parents and their children up to 4 years old and Pre-Kindy programs for 2 years – 4 years old.

Our Children's Services programs continue to receive very good feedback from parents with most of our users being repeat families or friends of previous families. We had to look into what the demand was in the area at the beginning of the year as our year started off very slow and quiet as our times 9-2 did not suite working families. We sent out a survey to what the families need and adjusted our program to suit the community.

Pre-Kindy Services

We had lots of demand for families wanting for then one day a week for 2-year-olds so we opened our age range from 2-4 daily we are open 8-4pm and families can choose to attend a shorted day if they like.

Enrolment started off very low so we had to make some changes after making the changes are classed doubled and we were close to having a wait list and our enquiries were huge.

Our Pre-Kindy has seen a change in staff and we sadly said bye to Evie, Tammy and Angie towards the end of the year due to family commitments. We welcomed a new team of passionate experienced teachers to the program. We welcomed Nicole who is our pre-Kindy coordinator and Sarah and Anom to the team to keep up with the demand.

June 2022

Enrolments	Monday – Friday 2years – 4years	
Max class size	20 Children per day	
Sessions: Monday \$45 Tue-Thurs \$55		
Monday	- 6 bookings	8am-4pm
Tuesday	- 13bookings	8am-4pm
Wednesday	- 10 bookings	8am -4pm
Thursday	- 11 bookings	8am-4pm
Friday	- Not open until 2023	

End of year

Enrolments	Monday – Friday 2years – 4years	
Max class size	20 Children per day	
Sessions: \$90per day		
Monday	- 11 booking	8am-4pm
Tuesday	- Full wait	8am-4pm
Wednesday	- 18 Bookings	8am -4pm
Thursday	- 18 bookings	8am-4pm
Friday	Not open until 2023	

Number of booking Children Jan – Dec 2022

	Feb	Mar	Apr	May	Jun	Jul	Aug	Sep	Oct	Nov	Dec
Mon	6	6	6	5	5	6	10	12	12	12	12
Tues	10	10	11	9	10	13	14	17	19	20	17
Wed	8	11	10	10	11	11	13	17	18	18	16
Thurs	10	10	9	9	10	13	16	20	20	20	18
TOTAL	34	34	36	33	36	43	53	66	69	70	63

Early Years Playgroup

Our Playgroup Program has changed a lot compared to the previous year, we noticed a decrease. In families attending, we decided to consolidate run one weekly Friday playgroup. We hold playgroup in the Pre-Kindy room so families are able to see all our environments and be able to easily transition from playgroup into the pre-Kindy program if they want to. We had different activities planned per term. Below are some of the programs we ran.

<p><u>Fri 29th Apr</u></p> <p>Let's make our own remembrance poppy's and make Anzac biscuits to commemorate ANZAC day</p> 	<p><u>Fri 6th May</u></p> <p>Let's celebrate Mother's Day by planting our favourite flowers and painting our pots.</p> 
<p><u>Fri 13th May</u></p> <p>This week bring along your teddy as we will be having a teddy bear picnic party</p> 	<p><u>Fri 20th May</u></p> <p>Join in on our outdoor obstacle course, lets see how high you can jump and how fast you can run.</p> 
<p><u>Fri 27th May</u></p> <p>Bring your gumboot so we can get outside and jump in some muddy puddles</p> 	<p><u>Fri 3rd June</u></p> <p>Today we will be getting messy playing with slime making lots of different monster faces.</p> 
<p><u>Fri 10th June</u></p> <p>Today we are going mad scientists and create some crazy experiments</p> 	<p><u>Fri 17th June</u></p> <p>Join in the fun and create lots of different patterns with our potato stamping.</p> 
<p><u>Fri 24th June</u></p> <p>Join in the fun for some science activities and creating our very own lava lamps.</p> 	<p><u>Fri 1st July</u></p> <p>Today we celebrate Naidoc week</p> 

Enrolments	6 months
(min) to 4-year-old	
Max class size	20
Sessions: \$10each siblings \$5	
Friday 9am-10:30am	

Number of bookings Children Jan – Dec 2022

	Feb	Mar	Apr	May	Jun	Jul	Aug	Sep	Oct	Nov	Dec
Friday	17	18	11	18	20	8	13	13	15	15	10
TOTAL	17	18	11	18	20	8	13	13	15	15	10

OUR YEAR IN PHOTOS

PRE-KINDY



PLAYGROUP



Community involvement







LEARN. COOK. EAT.



FOOD SENSATIONS® FOR CHILDREN Joondalup family centre

PUT THE FUN BACK INTO FAMILY MEALTIMES

Are you a parent or carer of a child under 5?

Join Foodbank WA's university qualified nutritionists for a free, hands-on, and fun healthy eating and cooking program.

Enjoy getting to know other parents and take-home free recipe books, *Let's Feed the Family* book, a reusable shopping bag and kids healthy eating plate.

- ➔ Healthy eating for children aged 0-5 years
- ➔ Tips for making mealtimes enjoyable
- ➔ Lunchboxes, label reading and food safety
- ➔ Feeding the family on a budget
- ➔ Quick, easy, delicious, low-cost recipes

For more information, recipes, resources and more please visit foodbank.org.au/WA/food-sensations-for-children

WHEN

Week 1: Tues Aug 23
Week 2: Tues Aug 30
Week 3: Tues Sept 6
Week 4: Tues Sept 13
Week 5: Tues Sept 20

TIME

9:15am – 12:00pm

WHERE

Joondalup Family Centre
25 Jolstra Crescent
JOONDALUP

REGISTER

Call 9300 3036 or email
admin@joondalupfamilycentre.com.au

FREE CRECHE
Bookings required








FOODBANK.ORG.AU

FEED. EDUCATE. ADVOCATE.







YOUR SUPPORT

The continued support of and engagement with our local community is key to the future of the Joondalup Family Centre. We would like to thank you all for making 2020 an engaging and successful. Your continued support and engagement are vital to our survival. You can support us through:

- Engaging with us on Social Media
- Becoming a Committee Member by contacting the Secretary
- Registering your interest as a program volunteer
- Participating in one of our programs or services offered at the JFC
- Facilitating your community services or workshops at the JFC
- Hiring our facilities for your next Children's Party or business venture
- Spreading the word of the JFC Programs and Services with your neighbours, friends, and family
- Provide us with valuable feedback.

Contact Us

25 Jolstra Crescent Joondalup WA 6027
(08) 9300 3036

www.joondalupfamilycentre.com.au

Office Hours: Weekdays 8am – 4pm

Management Committee:

committee@joondalupfamilycentre.com.au

Programs and Services Manager:

manager@joondalupfamilycentre.com.au

Pre-Kindergarten:

kindergarten@joondalupfamilycentre.com.au

General Enquiries

admin@joondalupfamilycentre.com.au



Come and join our family

